

CERTIFICATE OF ANALYSIS

ISO/IEC 17025:2017 ACCREDITATION #103104



Order #: 80557
 Order Name: Wyoming 600mg
 FS
 Batch#: F921OZ-01
 Received: 07/13/2021
 Completed: 07/19/2021



Sample



0.278% D9-THC	1.950% Total CBD
663.4 mg Cannabinoids per unit	552.8 mg CBD per unit

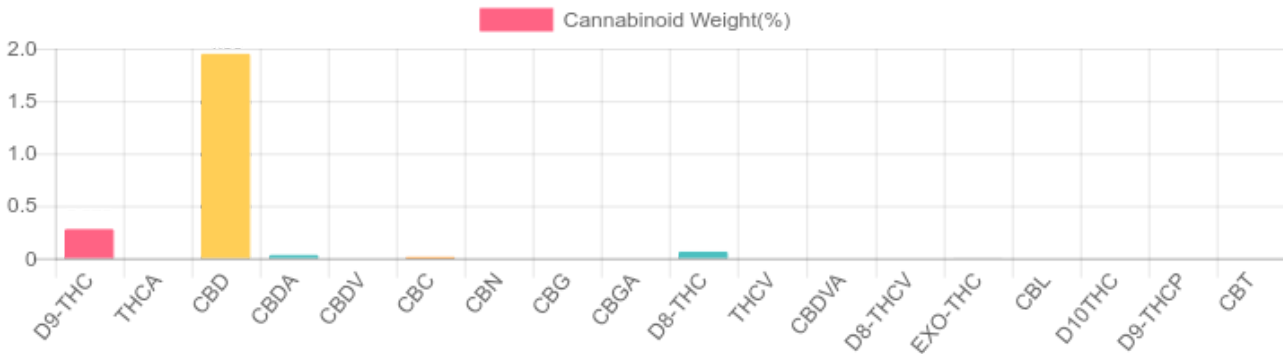
1 unit = 30 ml per unit x density (.945) x Cannabinoid concentration

Cannabinoids Test

SHIMADZU INTEGRATED UPLC-PDA
 GSL SOP 400

UPLOADED: 07/15/2021 09:50:09

Cannabinoids	LOQ	weight(%)	mg/g	mg/unit
D9-THC	10 PPM	0.278%	2.777	78.728
THCA	10 PPM	N/D	N/D	N/D
CBD	10 PPM	1.950%	19.499	552.797
CBDA	20 PPM	0.032%	0.317	8.987
CBDV	20 PPM	N/D	N/D	N/D
CBC	10 PPM	0.012%	0.125	3.544
CBN	10 PPM	N/D	N/D	N/D
CBG	10 PPM	N/D	N/D	N/D
CBGA	20 PPM	N/D	N/D	N/D
D8-THC	10 PPM	0.063%	0.627	17.775
THCV	10 PPM	N/D	N/D	N/D
CBDVA	20 PPM	N/D	N/D	N/D
D8-THCV	20 PPM	N/D	N/D	N/D
EXO-THC	20 PPM	0.006%	0.055	1.559
CBL	20 PPM	N/D	N/D	N/D
D10THC	20 PPM	N/D	N/D	N/D
D9-THCP	20 PPM	N/D	N/D	N/D
CBT	20 PPM	N/D	N/D	N/D
TOTAL D9-THC		0.278%	0.278%	78.7
TOTAL CBD*		1.950%	19.499	552.8
TOTAL CANNABINOIDS		2.341%	23.400	663.4



Reporting Limit 10 ppm
 *Total CBD = CBD + CBDA x 0.877
 N/D - Not Detected, B/LOQ - Below Limit of Quantification

Dr. Andrew Hall, Ph.D., Chief Scientific Officer

Ben Witten, MS, MT., Lab Director

Green Scientific Labs
 info@greenscientificlabs.com
 1-833 TEST CBD



Green Scientific Labs uses its best efforts to deliver high quality results and to verify that the data contained therein are based on sound scientific judgment and levels listed are guidelines only and all data was reported based on standard laboratory procedures and deviations. However Green Scientific Labs makes no warranties or claims to that effect and further shall not be liable for any damage or misrepresentation that may result from the use or misuse of the data contained herein in any way. Further, Green Scientific Labs makes no claims regarding representations of the analyzed sample to the larger batch from which it was taken. Data and information in this report are intended solely for the individual(s) for whom samples were submitted and as part of our strict confidentiality policy, Green Scientific Labs can only discuss results with the original client of record.

CERTIFICATE OF ANALYSIS

ISO/IEC 17025:2017 ACCREDITATION #103104



Order #: 80557
 Order Name: Wyoming 600mg FS
 Batch#: F921OZ-01
 Received: 07/13/2021
 Completed: 07/19/2021



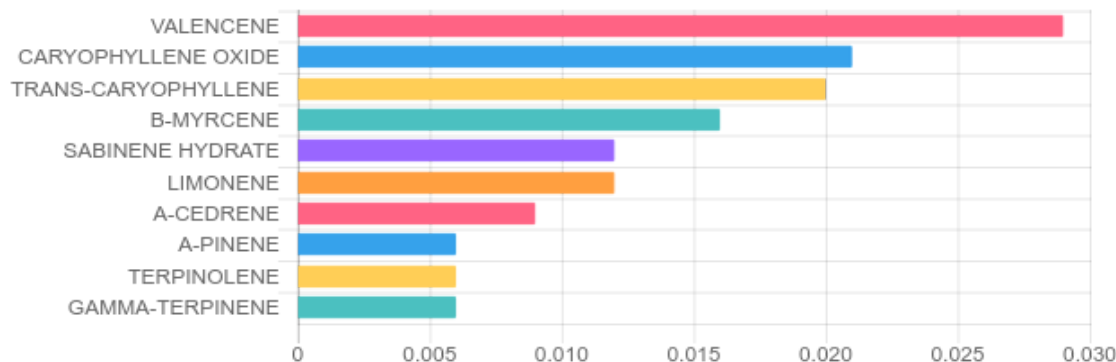
TERPENES: TOTAL (0.151%)

GSL SOP 404
 Uploaded: 07/19/2021 15:46:51

Headspace GCMS - Shimadzu GCMS QP2020 with HS20

Terpene	Results (%)	LOQ (%)	LOD (%)	Terpene	Results (%)	LOQ (%)	LOD (%)
3-CARENE	B/LOQ	0.003%	0.001%	GERANIOL	B/LOQ	0.003%	0.001%
A-BISABOLOL	B/LOQ	0.003%	0.001%	GERANYL ACETATE	B/LOQ	0.003%	0.001%
A-CEDRENE	0.009%	0.003%	0.001%	GUAJOL	B/LOQ	0.003%	0.001%
A-HUMULENE	B/LOQ	0.003%	0.001%	HEXAHYDROTHYMOL	B/LOQ	0.003%	0.001%
A-PINENE	0.006%	0.003%	0.001%	ISOBORNEOL	B/LOQ	0.003%	0.001%
A-TERPINENE	B/LOQ	0.003%	0.001%	ISOPULEGOL	B/LOQ	0.003%	0.001%
B-MYRCENE	0.016%	0.003%	0.001%	LIMONENE	0.012%	0.003%	0.001%
B-PINENE	B/LOQ	0.003%	0.001%	LINALOOL	0.004%	0.003%	0.001%
BORNEOL (MIX OF ISOMERS)	B/LOQ	0.003%	0.001%	NEROL	B/LOQ	0.003%	0.001%
CAMPHENE	B/LOQ	0.003%	0.001%	P-MENTHA-1, 5-DIENE	B/LOQ	0.003%	0.001%
CAMPHOR (MIX OF ISOMERS)	B/LOQ	0.003%	0.001%	PULEGONE (+)	B/LOQ	0.003%	0.001%
CARYOPHYLLENE OXIDE	0.021%	0.003%	0.001%	SABINENE HYDRATE	0.012%	0.003%	0.001%
CEDROL	B/LOQ	0.003%	0.001%	TERPINEOL (MIX OF ISOMERS)	B/LOQ	0.003%	0.001%
CIS-NEROLIDOL	B/LOQ	0.003%	0.001%	TERPINOLENE	0.006%	0.003%	0.001%
CIS-OCIMENE	0.004%	0.003%	0.001%	TRANS-CARYOPHYLLENE	0.020%	0.003%	0.001%
ENDO-FENCHYL ALCOHOL	B/LOQ	0.003%	0.001%	TRANS-NEROLIDOL	B/LOQ	0.003%	0.001%
EUCALYPTOL	B/LOQ	0.003%	0.001%	TRANS-OCIMENE	B/LOQ	0.003%	0.001%
FENCHONE (MIX OF ISOMERS)	B/LOQ	0.003%	0.001%	VALENCENE	0.029%	0.003%	0.001%
GAMMA-TERPINENE	0.006%	0.003%	0.001%				

Top Terpenes Results:



Dr. Andrew Hall, Ph.D., Chief Scientific Officer

Ben Witten, MS, MT., Lab Director

Green Scientific Labs
 info@greenscientificlabs.com
 1-833 TEST CBD



Green Scientific Labs uses its best efforts to deliver high quality results and to verify that the data contained therein are based on sound scientific judgment and levels listed are guidelines only and all data was reported based on standard laboratory procedures and deviations. However Green Scientific Labs makes no warranties or claims to that effect and further shall not be liable for any damage or misrepresentation that may result from the use or misuse of the data contained herein in any way. Further, Green Scientific Labs makes no claims regarding representations of the analyzed sample to the larger batch from which it was taken. Data and information in this report are intended solely for the individual(s) for whom samples were submitted and as part of our strict confidentiality policy, Green Scientific Labs can only discuss results with the original client of record.